



**Best
Western
PLUS**



2018 Signage Package



RISINGSIGNS INC

3080 Bartlett Corporate Drive | Bartlett, Tennessee 38133
Ph. 901-380-9643 | customercare@risingsigns.com

Identification Signage



Room Number Signs
4.75" x 5"



2-line Room Sign
4.75" x 11.75"



5-line Room Sign
8.25" x 11.75"



3-line Room Sign
5.75" x 11.75"



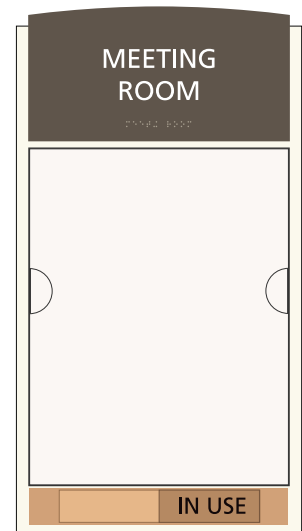
8-line Room Sign
11.75" x 11.75"



2-line Common Room Sign
6" x 9.25"



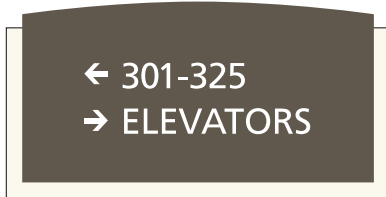
2-line Room Sign
4.75" x 9.25"



2-line Room Sign w/ window
17.125" x 9.25"



Identification Signage



2-line directional sign
4.75" x 9.25"



5-line directional sign
8.25" x 11.75"



2-line directional sign
4.75" x 11.75"



3-line directional sign
5.75" x 11.75"



8-line directional sign
11.75" x 11.75"

Restroom Signage



Restroom - Unisex w/ symbols
8.25" x 9.25"



Restroom - Unisex w/ dynamic
8.25" x 9.25"



Women
8.25" x 9.25"



Women - female symbol
8.25" x 9.25"



Women - female dynamic symbol
8.25" x 9.25"



Men
8.25" x 9.25"



Men - male symbol
8.25" x 9.25"



Men - male dynamic symbol
8.25" x 9.25"



Laundry Supplies
7.25" x 9.25"



Feminine product available
7.25" x 9.25"

Corridor & Elevator Evac Signage



Exit Stair Down (CA)
7.25" x 9.25"



Exit (CA)
7.25" x 9.25"



Exit Route (CA)
7.25" x 9.25"



Exit Stair Up (CA)
7.25" x 9.25"



Stairs/Exit Route (CA)
7.25" x 9.25"



To Exit (CA)
7.25" x 9.25"



Exit Ramp Down (CA)
7.25" x 9.25"



Exit
8.25" x 9.25"



Exit/Stairs Sign
8.25" x 9.25"



Stairs/Exit Sign
8.25" x 9.25"



Stairway id - (NYC)
8.25" x 9.25"

Corridor & Elevator Evac Signage



Accessible Direction - dynamic
Symbol
10" x 9.25"



Area of Refuge Sign
10" x 9.25"



Area of Refuge Sign - Dynamic Symbol
10" x 9.25"

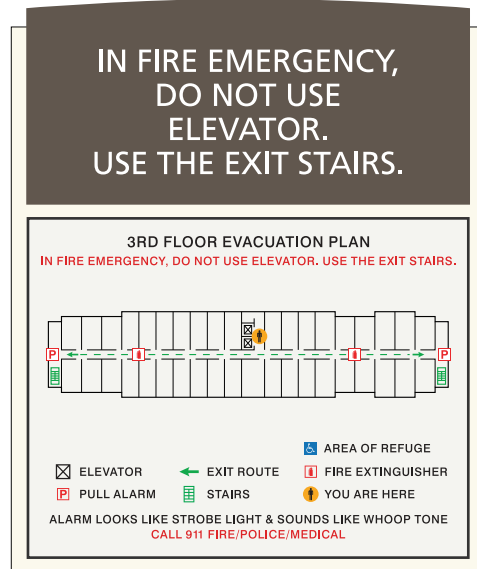


Accessible Direction Sign
10" x 9.25"

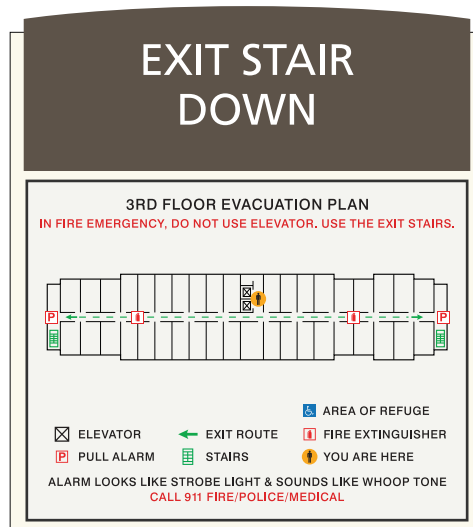
Corridor & Elevator Evac Signage



Standard Elevator Evac Plans (CA)
13.625" x 11.25"



Standard Elevator Evac Plans (NYC)
13.625" x 11.25"

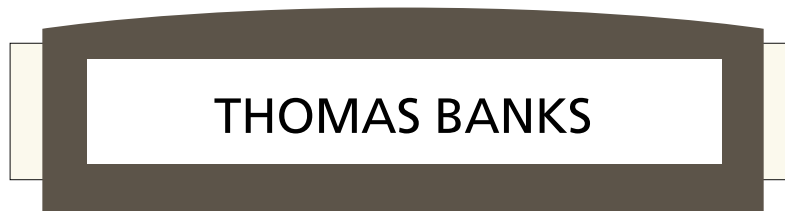


Standard Stairway Evac Plans (CA)
13.625" x 11.25"

Manager On Duty



Manager On Duty Sign
6" x 9.25"



Nameplate Sign
2.5" x 9.25"



Rules Signage

AREA FOR ASSISTED RESCUE INSTRUCTIONS

- Follow Exit Signs to Other Means of Egress.
- Persons Able to Use Exit Stairways Should Do So As Soon As Possible, Unless They Are Assisting Others.
- For Assistance, Wait in Designated Assistance Area for Help.

Area of Assistance Rescue Instructions
16.5" x 12"

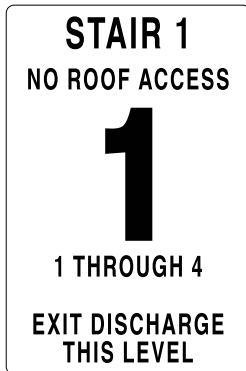
AREA OF REFUGE INSTRUCTIONS

- Follow Exit Signs to Other Means of Egress.
- Persons Able to Use Exit Stairways Should Do So As Soon As Possible, Unless They Are Assisting Others.
- In an Emergency, Push Intercom Button to Contact the Operator.
- For Assistance, Wait in Designated Assistance Area for Help.

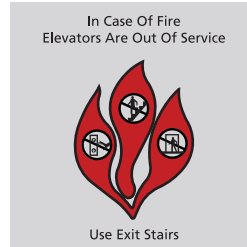
Area of Refuge Instructions
18.75" x 12"

Stairwell Signage

Level ID Sign
18" x 12"



Elevator Out of Service
12" x 12"



Photoluminescent Exit
Man (left)
4.5" x 4.5"



Photoluminescent Level ID
NC Code
18" x 12"



STAIR A
LEVEL 4



Photoluminescent Exit
Man (right)
4.5" x 4.5"



Photoluminescent Exit
Man (right)
4.5" x 8.5"



Photoluminescent Exit
Man (left)
4.5" x 8.5"



Stairwell Signage

Photoluminescent Accessible
Emergency Exit
4.5" x 4.5"



Photoluminescent Accessible
Emergency Exit - dynamic isa
4.5" x 4.5"



Photoluminescent directional
arrow (diagonal)
4.5" x 4.5"



Photoluminescent directional
arrow (straight)
4.5" x 4.5"



Photoluminescent No Exit
5.5" x 5.5"



Photoluminescent Room No.
Single Level unit - NYC
3.25" x 1.25"



Photoluminescent Room No.
Single Level unit - NYC
3.25" x 1.25"



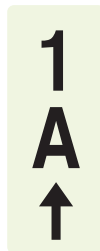
Photoluminescent Room No.
Single Level unit - NYC
4.25" x 1.25"



Photoluminescent Room No.
Multiple Entrance, Main - NYC
3.25" x 1.25"



Photoluminescent Room No.
Multiple Entrance, Main - NYC
3.25" x 1.25"



Photoluminescent Room No.
Multiple Entrance, Main - NYC
3.25" x 1.25"

